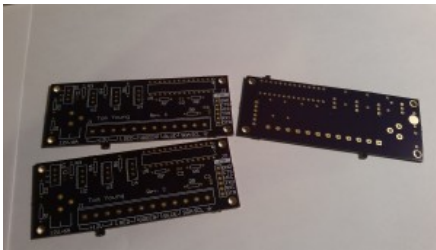


## Finishing up the lights interface

Yay they're here!!



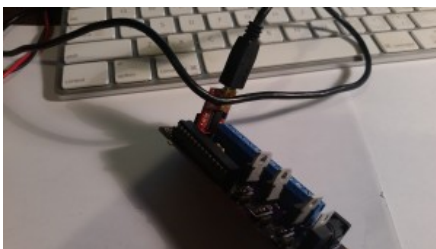
Mmmm they look so purdy :)



Doing some continuity checks before I begin soldering and risk blowing components up



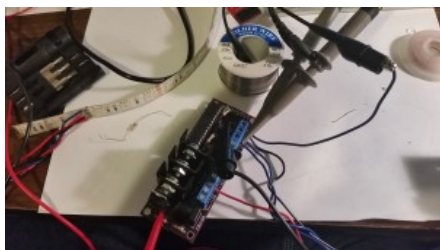
Most parts are on, save the I2C resistors and the heat sinks. Time to program the microcontroller:



It works

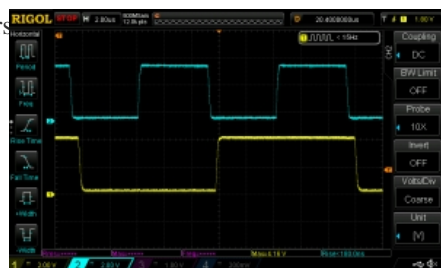


Let's hook up the scope to see what our I2C signals look like.



Holy moly they're awful with the ATmega328's built-in pullup resistors. Fortunately I left spots on the PCB to add my own. I ended up with 2.2k ohms. Nice edge transition, not too much current.

After the external pullup resistors



Now the hard part... running the damn wires through the walls. I'll update later on.

